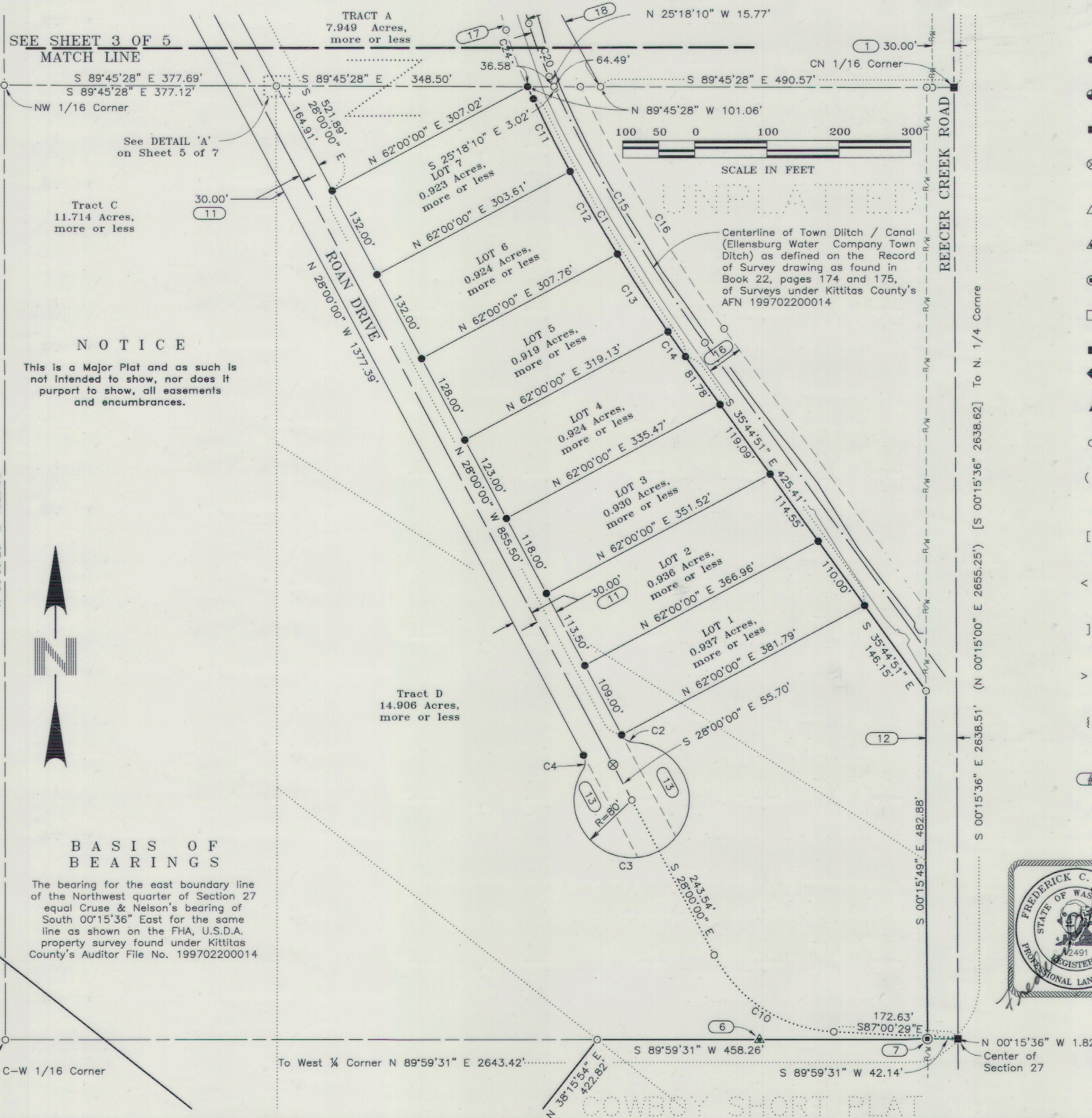


# PALOMINO FIELDS PLAT - DIVISION II

A PTN. OF THE E 1/2 OF THE NW 1/4 OF SECTION 27, TOWNSHIP 18 NORTH, RANGE 18 EAST, W.M.  
KITTITAS COUNTY, WASHINGTON

Receiving No. ....  
LP - 19-00003

181827



### LEGEND

- 5/8 - inch iron pin with surveyor's cap marked "LS 12491" monument set April, 2019
- ⊕ 3 - inch brass cap monument found September, 2016
- 5/8 - inch aluminum surveyor's cap monument stamped 'Kittitas County' found September, 2016
- ⊗ 2 - inch brass cap monument stamped 'LS 12491' grouted in a 2-inch pipe set in a monument case April, 2019
- △ 5/8 - inch iron pin with surveyor's cap stamped '12491' monument found September 2016
- ▲ 5/8 - inch iron pin with surveyor's cap stamped '18092' monument found September 2016
- ⊙ 5/8 - inch iron pin with no surveyor's cap monument found September 2016
- 1 - inch iron pin with no surveyor's cap monument found September 2016
- Railroad spike monument found September 2016
- ◆ 5/8 - inch iron pin with surveyor's cap marked "LS 49273" monument set July 11, 2017
- ▲ 5/8 - inch iron pin with surveyor's cap marked "LS 12491" monument found April 10, 2018 and verified
- Calculated point only - no monument found or set
- ( ) Previously recorded information from Preston Short Plat, Short Plat A-22, and shown on drawing as 'Kittitas Co. Short Plat No. 77-12', as found under Kittitas County's AFN 418140
- [ ] Previously recorded information from Record of Survey drawing as found in Book 22, pages 174 and 175, under Kittitas County's AFN 199702200014
- < > Previously recorded information from Record of Survey drawing as found under Kittitas County's AFN 199702200014
- ] [ Previously recorded information from Record of Survey drawing as found under Kittitas County's AFN 199702200014
- > < Previously recorded information from Statutory Warranty Deed found under Kittitas County's AFN 416766
- { } Previously recorded information from Palomino Fields Plat - Div. I, as found in Volume 12 of Plats, pages 201 through 205, under Kittitas County's AFN 201708150016
- # Note - See Sheet 5 of 7

### NOTICE

This is a Major Plat and as such is not intended to show, nor does it purport to show, all easements and encumbrances.

### BASIS OF BEARINGS

The bearing for the east boundary line of the Northwest quarter of Section 27 equal Cruse & Nelson's bearing of South 00°15'36" East for the same line as shown on the FHA, U.S.D.A. property survey found under Kittitas County's Auditor File No. 199702200014



INSTRUMENT USED		INDEXING DATA	
Trimble R10 GPS Receivers			
Traverse Closure Meets Standards Per WAC 332-130-090		S27 T18N R18E	
<b>WESTERN PACIFIC ENGINEERING &amp; SURVEY</b>			
A TERRA DEVELOPMENT SERVICES CORPORATION 1328 E. Hunter Place, Moses Lake, Washington T:(509)765-1023 F:(509)765-1298 Services in Washington and Idaho			
<b>LCU, INC.</b>			
Surveyed by	LMH	Scale	1" = 100'
Drawn by	Tml/FCS	Sheet	2 of 7
Checked by	FCS	Project No.	18146

File --- Project Desc.: S:\18146\18146 DIV 2\18146 MP2.pro (Plotted - Apr 18, 2019)